

Driver description

System requirements:

macOS 10.13

macOS 10.15.7

macOS 11.7.4

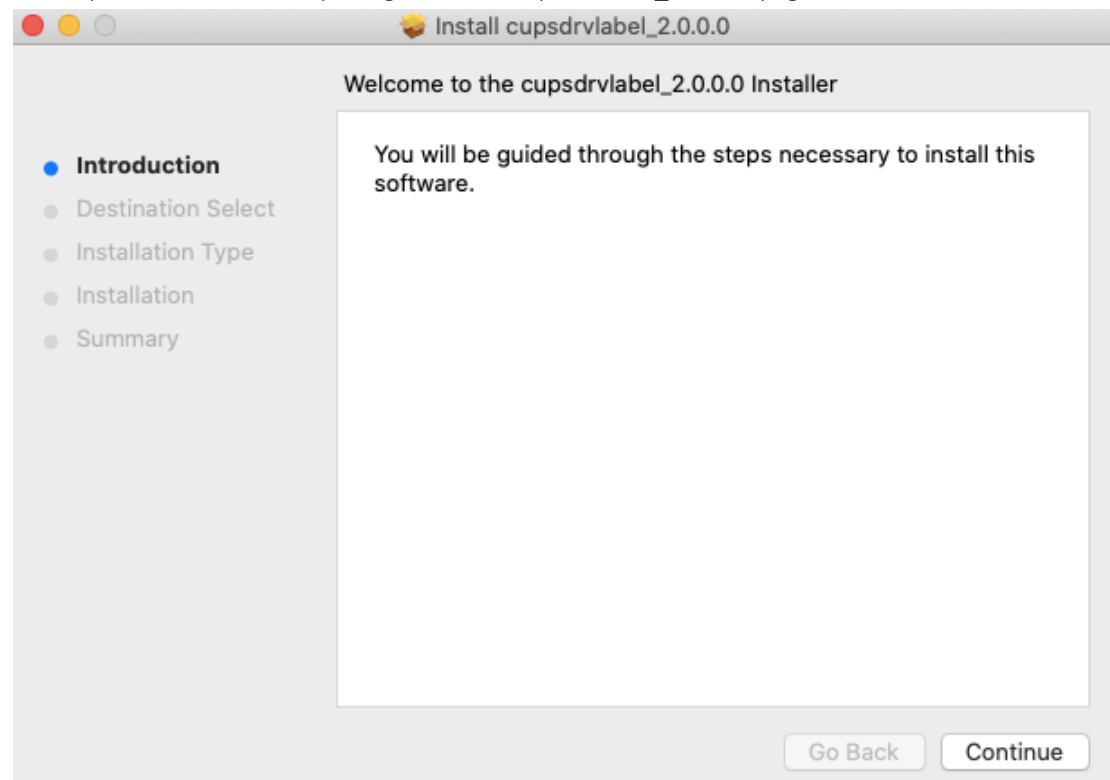
macOS 12.6.1

macOS 13.3

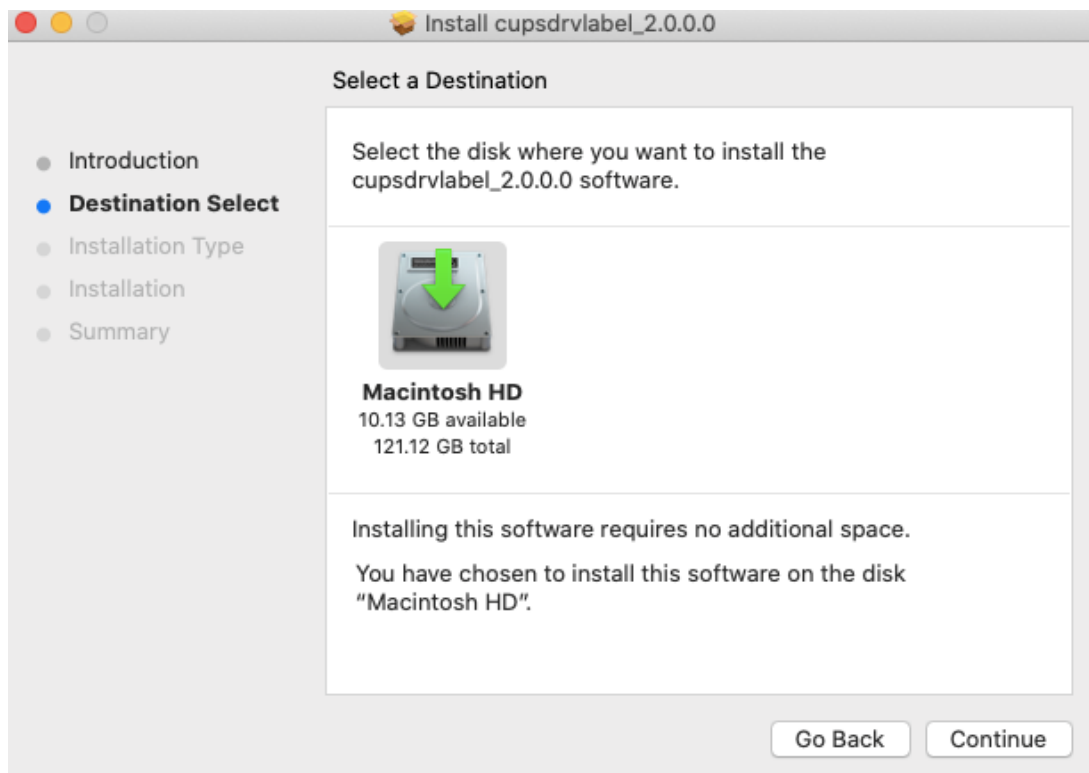
macOS 13.4

=====
=====Installation steps=====

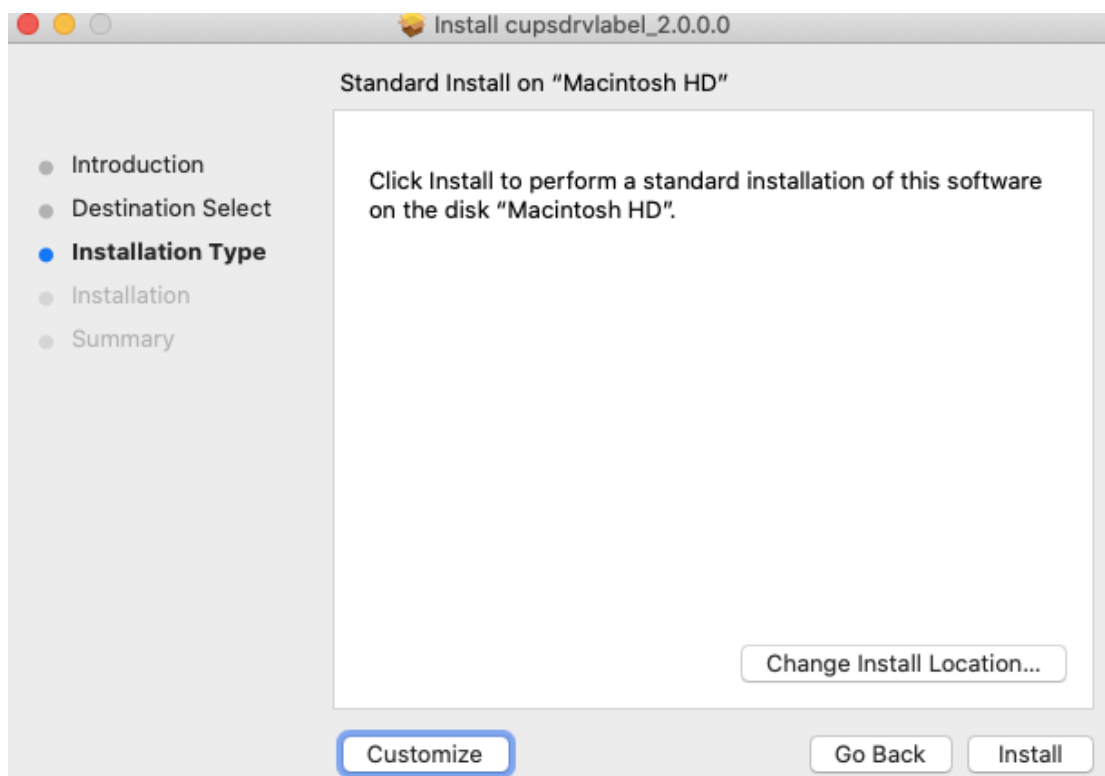
1、Unpack the installation package and run cupsdrvlabel_2.0.x.x. pkg.



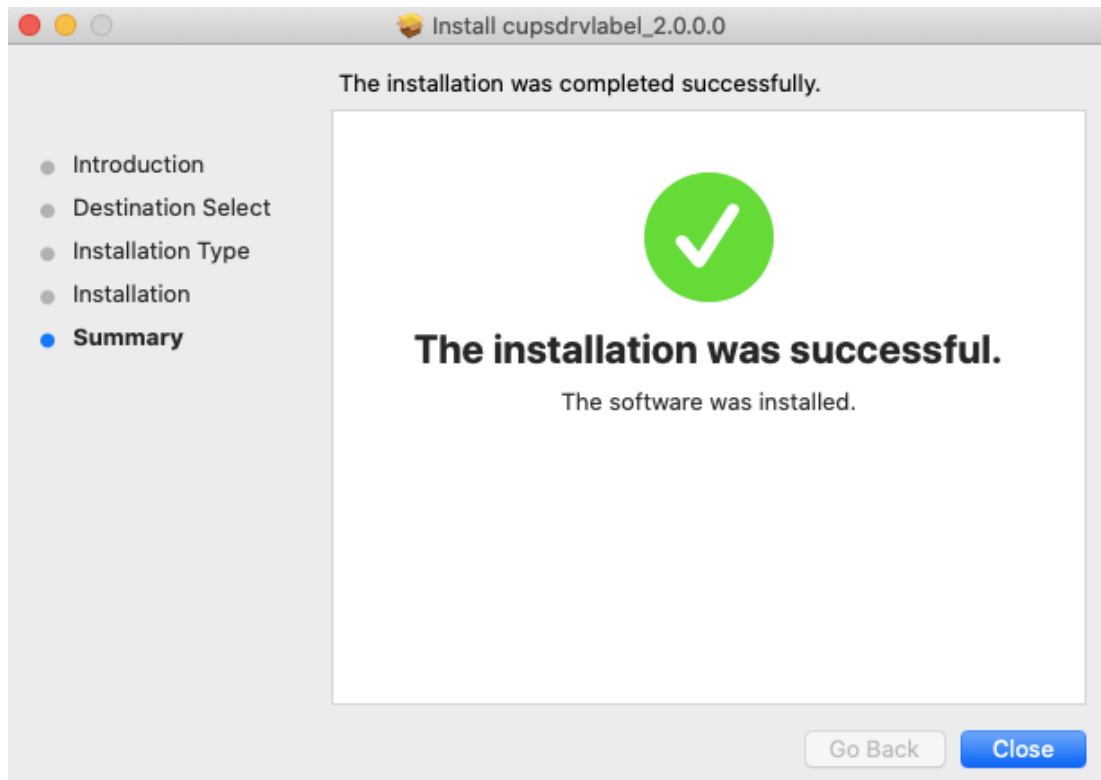
2、Click continue and select local hard disk for installation.



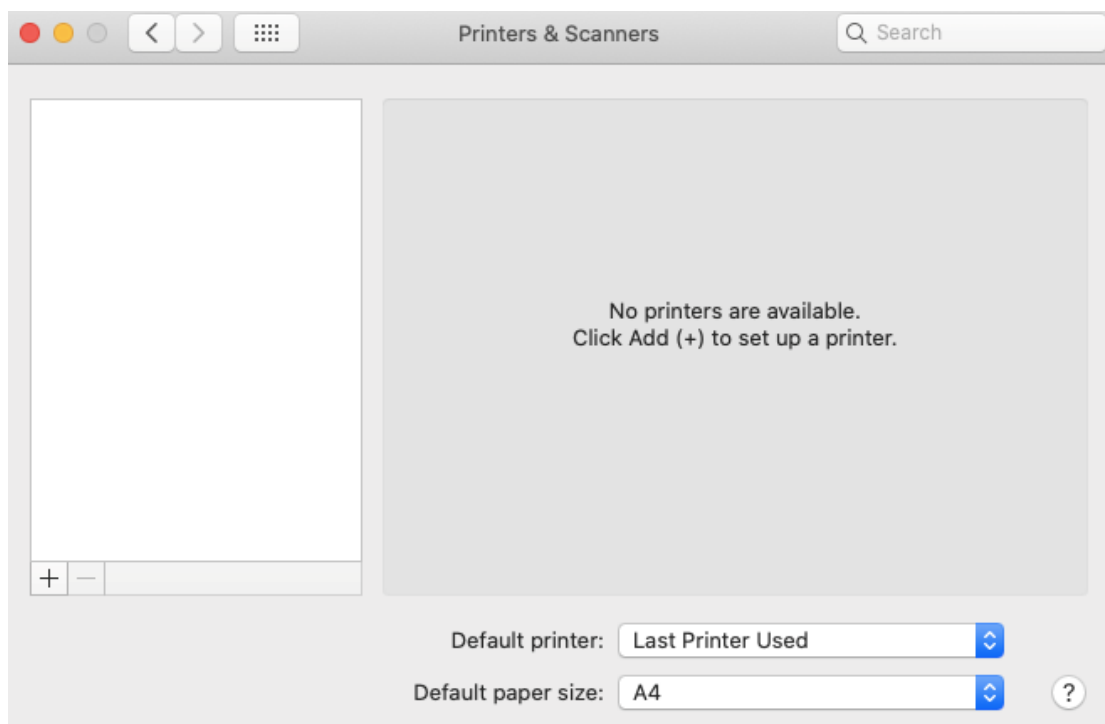
3、Click continue. If there are no special requirements, continue to click Install and enter the password to confirm the installation.



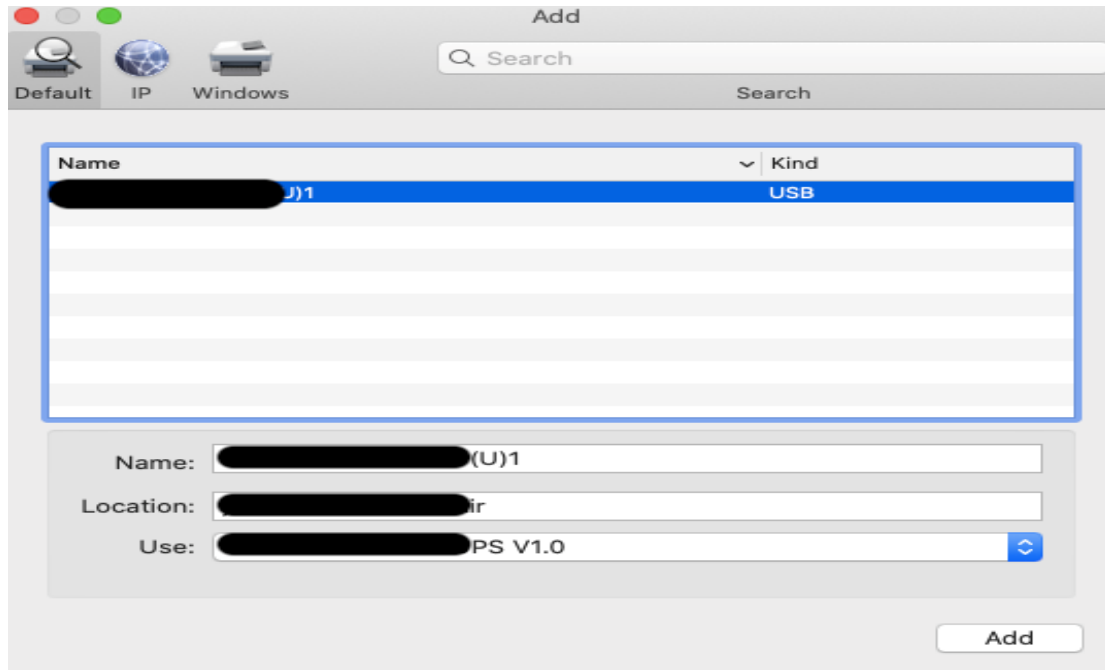
4、The installation is successful as follows.



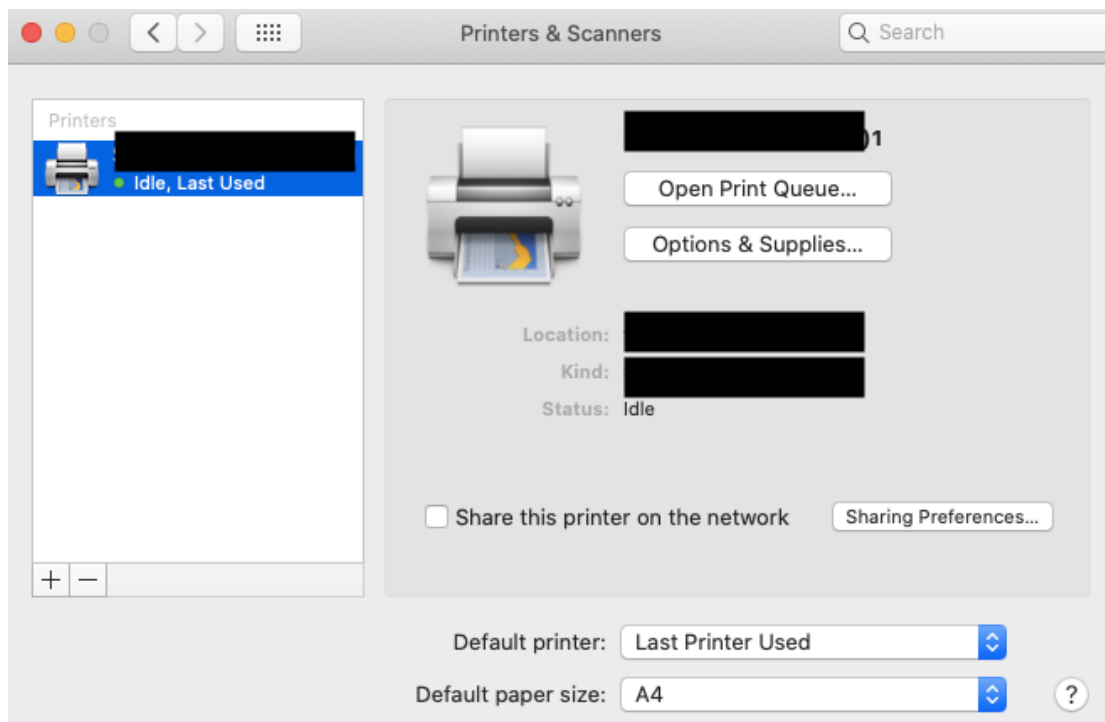
5、Open and connect the printer, open system preferences, and select printer and scanner.



6、Click on the lower left corner “+”, Enter the add printer page, select the printer to be added and add the corresponding driver in the use bar, and click Add.



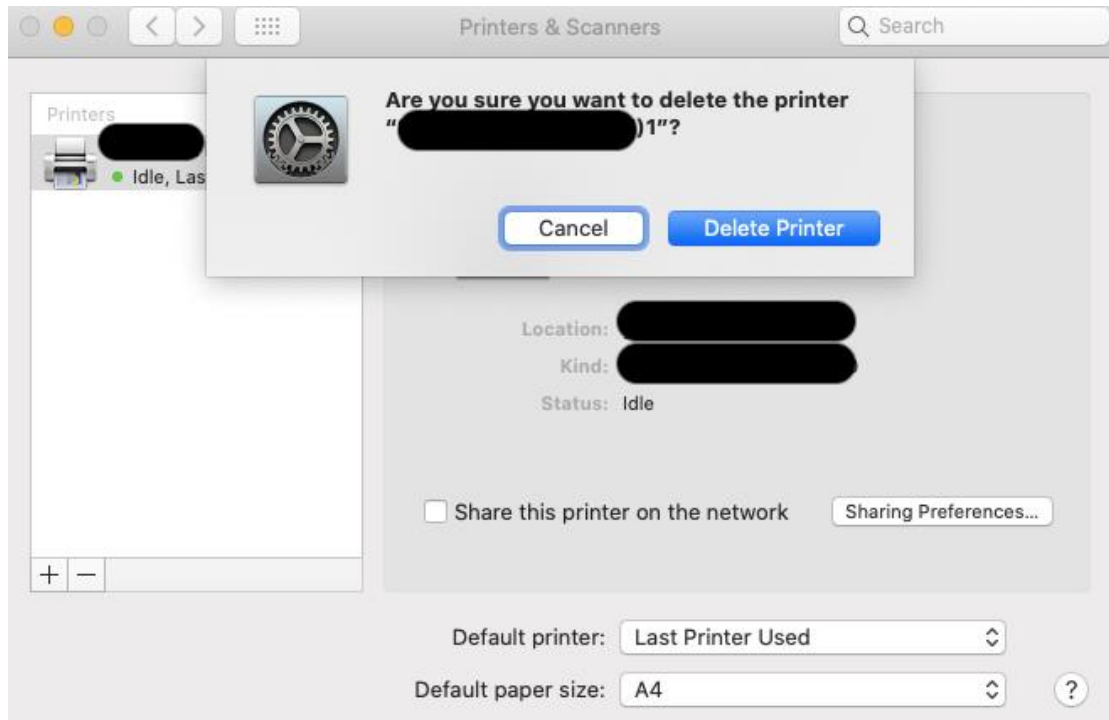
7、 The installation is successful, as follows.



=====

=====Uninstall steps=====

1、 Open the system preferences, select the printer and scanner, select the printer to delete, and click "-" in the lower left corner。



2、Click Delete printer, the deletion is successful, and there is no such machine in the printer list 。

